

Strickly Business !!

WESTERN TRANSPORTATION, INC.

September /October 2003

Volume 2, Issue 2

News Flash

WESTERN TRANSPORTATION INC., is delighted to bring you our 2nd Issue of **Strickly Business!!** In this issue will discuss some important safety concerns, ways for you to eat great without gaining weight during the upcoming holiday season on the road, and other fun topics , so strap on your seatbelt and enjoy the ride!!

First, let us start by saying Western Transportation ,Inc. has had to make an adjustment to the driver daily log procedure. We will no longer be logging mileage in at 73 mph. As of **August 27,2003** all drivers must log mileage according to the speed limit in each state. **This is a DOT requirement** so please adjust your driving skills and logs before sending them to the office.

In addition it has been brought to our attention some of the Pilot Fuel Stations are overcharging .03 cents per gallon. Double check the posted price when fueling. If you encounter this problem bring it to the attention of management **immediately**. This effects the company and your pay, so please pay attention when paying at the pump.



The fall is here and the snow man is on his way. We all know what bad weather can do.

While the weather's changing so are road conditions. Drivers please be sure to check your vehicles at every stop or as often as possible to prevent any delays in service to our customers, break downs, and/ or accidents.

Start digging out those winter clothes and sleeping bags. Don't forget your thermos to keep that chicken noodle soup from getting cold.

How well do you know the transportation industry? Very well, a little, somewhat, or not at all. If you answered very well then it's time to test your knowledge. Turn to page 3 for more details on the Transportation Trivia and how you can have your driver profile featured in our next issue, win a awesome prize and certificate.

New FMCSA Data

The Federal Motor Carrier Safety Administration denied the petition for a pilot program using drivers ages 18 to 21. If you are thinking about bringing someone into this game younger than 21 think again.

The FMCSA is concerned about the maturity and driving experience needed to operate a truck in interstate commerce. Congress prohibited all funding for this program because it did not have

enough information to measure if the pilot program would be as safe as the current program, where license holders must be 21 years or older.

Let us know how you feel about this program log onto our website @ www.westerntrans.com or simply mail a postcard with your name and comment to 1600 Hart Street Bldg 1 Unit 1 Rahway, NJ 07065.

Inside this issue:

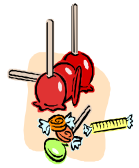
Announcements	1
New FMCSA data	1
5 Helpful Hints for the Holidays	2
Guess Who's...?	2
Transportation Trivia	2
Transportation Trivia (continued)	3
Take Home A Holiday Recipe	4

Special Point of Interest

- Nov.1st the State of New York will begin fining truck operators \$250 to \$875 per incident for idling more than three minutes at New York City's Hunts Point Produce Market. City law stipulates that trucks and buses of any engine type may not idle for more than three consecutive minutes, except when loading and unloading, or when processing something.

5 Helpful Hints For The Holidays

1. Check your tires as often as possible. You never know what may lie beneath them.
2. Always look in the sleeper berth before driving.

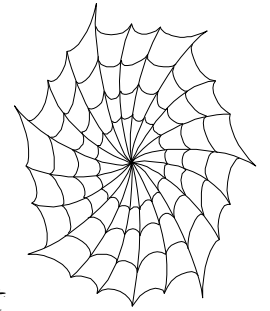


Someone may have slipped in on the way.

3. Don't eat too much candy on the road. It may cause a couple road trips to the dentist.



4. Make sure the trailer doesn't have any dead weight.



cut any creepy corners you just might run into a dead end.



GUESS WHO'S HAVING A BIRTHDAY ...??

OCTOBER

HE IS THE ONE ,THE ONLY ,
PRESIDENT OF WESTERN TRANSPORTATION
-AKA- BOSS-MAN

**MR. JAMES PURYEAR -
10/26**

**HAPPY BIRTH DAY FROM
ALL OF US!!!**



Let's Give A Birthday
Shout Out to.....

Carlos Torres -10/17
Trevor Ennis- 10/29



Tr ns rt #i n Tri i

THE FUN BEGINS HERE. SO, YOU'VE BEEN IN THIS INDUSTRY AS LONG AS YOU CAN REMEMBER AND YOU KNOW ALL THE IN'S AND OUT'S UH.. LET'S SEE HOW MANY OF YOU ARE ON TOP OF YOUR GAME WHEN IT COMES TO D.O.T. RULES, REGULATIONS, AND REQUIREMENTS. **ANSWER ALL** THE QUESTIONS ON PAGE 3 CORRECTLY ,SEND YOUR ANSWERS IN ALONG WITH YOUR

DRIVER PROFILE AND YOU'LL BE FEATURED IN THE NEXT ISSUE OF " **Strickly Business !!**". OH! DID WE FORGET TO MENTION YOU'LL RECEIVE A SAFETY CERTIFICATE AND GET TO CHOOSE A COOL PRIZE FROM THE DRIVER TREASURE BOX.

PUT ON YOUR THINKING CAP AND LET THE SHOW DOWN BEGIN...

GOOD LUCK!!!!!!!



1. In what year was Western Transportation Inc. founded?
A) 1977 B) 1980 C) 1981 D) None of the above

2. How many states does Western service?
A) 23 B) 11 C) 37 D) 48

3. A properly vented fuel cap can be used on a fuel tank equipped with another fuel venting system.
TRUE OR FALSE

4. Windshield washer systems are required. TRUE or FALSE

5. What does the phrase “reasonable accuracy” mean?
A) Accuracy is required when driving C) Neither A or B
B) Plus or minus 5 mph at a speed of 50 mph D) Both

6. Drivers must have a “driver exemption log in possession when claiming the 100 air-mile radius?
TRUE or FALSE

7. How many times can a motor carrier relieve a driver from duty within a tour of duty?
A) Once B) Twice C) Three D) None of the Above

8) If a CMV has a defective tire , the driver can remove one and drive on a axle and three tires? TRUE or FALSE

9) What was Charles Bronson’s first starring role?
A) Man with a Camera C) Machine-Gun Kelly
B) The Travels of Jamie McPheeters D) Once Upon a Time in the West

10) In what year did Charles Bronson star in the film “Death Wish”?
A) 1973 B) 1974 C) 1975 D) 1976

WESTERN TRANSPORTATION,
INC.

1600 Hart Street Bldg 1 Unit 1

Rahway, NJ 07065

Phone (888) 459-1919

Phone (732) 381-7500

Dispatch (732) 381-5493

Fax (732) 381-5496

Visit us on the web @

www.westerntrans.com

For a tasty treat cut out and try this
recipe from Patti Labelle's Cuisine
Cook Book

**Heavenly Carrot Cake with Cream
Cheese Frosting**

2 1/2 cups all - purpose flour
2 teaspoons baking soda
1/2 teaspoon ground cinnamon
1/8 teaspoon ground allspice
1/2 teaspoon salt
2 cups sugar
1 cup vegetable oil
2 large eggs(room temperature)
2 teaspoons vanilla extract
Four 4 oz. jars carrot baby food (1 1/2
cups)
One 8 oz. can crushed pineapple,
drained well
3/4 cup (3 oz) chopped walnuts
1/2 cup raisins

FROSTING

8 oz cream cheese (room temperature)
4 tablespoons (1/2 stick) butter (room
temperature)
1 tablespoon half and half or milk
1/2 teaspoon almond extract
1/2 teaspoon vanilla extract
4 cups confectioners' sugar (1 pound)
15 walnut halves ,optional

